



Attention water resources professionals, regulators, consultants, academics, and practitioners: Save the dates for an intensive, interactive course covering the full range of hydrology and hydraulics:

**Learn rainfall-runoff
and flood routing**

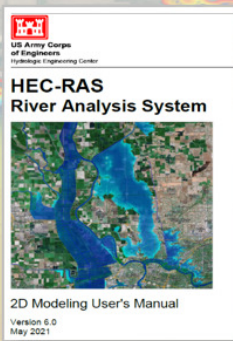
HEC-HMS

**Build, run, and animate
1D and 2D flood models**

HEC-RAS

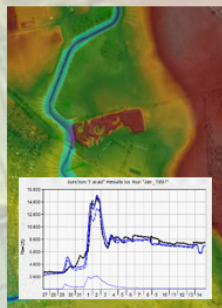
Master free software in this intensive, interactive course

Auckland 13-16 April 2026



**Registration forms
below**

- Rainfall Runoff
- Hydraulic Structures
- Flood Mapping
- Risk Assessment
- GIS Interfacing
- Output Animations
- ★ Professional Membership Discounts
- ★ Academic and Group Rate Discounts
- ★ Professional Development Certification

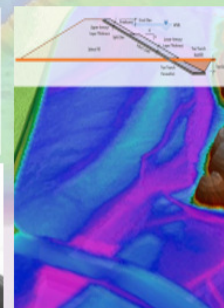


Dr. Steven Joy nes, Golovin

Steven has over 30 years' experience in rainfall runoff modelling, hydraulic design, and flood mapping. He has conducted HEC-HMS and HEC-RAS training courses in New Zealand since 2011.

Krey Price, Surface Water Solutions

Krey is a civil engineer with a 25-year, international career focussed on river mechanics and hydraulic modelling. Krey has led over 400 worldwide HEC-HMS and HEC-RAS training courses.



- Day 1 - Mon 13 Apr: HEC-HMS Basics & Mitigation Modelling
- Day 2 - Tue 14 Apr: HEC-HMS Basics & Catchment Modelling
- Day 3 & 4 - Wed 15 and Thu 16 Apr: HEC-RAS 2D Essentials and more





Monday 13 April
HEC-HMS: Basics & Mitigation

Tuesday 14 April
HEC-HMS: Basics & Catchments

**Wednesday 15 April &
Thursday 16 April**
**HEC-RAS 2D Essentials
and More!**

Schedule and pricing:

| Day | Course | Price +GST |
|-------|----------------------------------|------------|
| 1 | HEC_HMS - basics & mitigation | \$ 900 |
| 2 | HEC-HMS - basic & catchments | \$ 900 |
| 3 & 4 | HEC-RAS - 2D essentials and more | \$ 1,800 |

Note: Registration discounts are available for multiple courses, multiple registrants from a single organisation, and members of professional organisations (NZSOLD, NZHS, and Engineering NZ). Previous course attendees can qualify for additional discounts. Details must be provided when requesting a discount.

Please direct pricing enquiries to steven@golovin.co.nz.

Contents:

**DAY 1 Monday 13 April 2026:
HEC-HMS – basics & mitigation**

- Review of TP108
- Overview of Precipitation-Runoff Processes
- Basin Precipitation
- Rainfall Loss Rates Computation
- Channel Routing
- Multiple catchment and stream modelling
- Structures
- Basins
- Mitigation of peak flows
- Conducting simulation runs

**DAY 2 Tuesday 14 April 2026:
HEC-HMS – basics and catchments**

- Overview of Precipitation-Runoff Processes
- Basin Precipitation
- Rainfall Loss Rates Computation
- Using GIS tools in HEC-HMS
- Model calibration
- Using 2D Flow in HEC-HMS
- Working with Depth-Area Analysis
- Working with Optimisation Trials
- Working with Time Series Results
- Exporting results for use in HEC-RAS
- Creating a basin map

DAY 3 and 4 Wednesday 15 and Thursday 16 April 2026

HEC-RAS – 2D essentials and more

- File management with HEC-RAS
- RAS Mapper and GIS interfacing
- Importing terrain files
- Setting up a 1D network
- Entering reach data
- Entering cross sectional data
- Entering roughness data
- Junctions
- Bridges and culverts
- Steady and unsteady flow
- Executing plan files
- Floodplain analysis
- Interpreting and checking results
- Computational mesh generation
- Creating 2D areas
- Hydrologic boundary conditions
- Time step selection
- Entering unsteady flow data
- Computational options and tolerances
- Setting up plan files
- Adding internal structures
- Breaching dams and lateral weirs
- Viewing and exporting in RAS Mapper
- Troubleshooting models
- Calibrating models
- Building your own model from scratch

All course days run from 9.00 am to 4:30 pm

Certification of professional development hours available to all attendees

Location:

Quality Hotel Parnell
10/20 Gladstone Road
Parnell, Auckland 1052
+64 20 7365 0519



Registration Details

Organisation

Postal Address

Email contact

Dietary requirements

| Course | Date | Attendees Name | Fee (\$) |
|--------|------|---------------------|----------|
| | | | |
| | | | |
| | | | |
| | | | |
| | | | |
| | | | |
| | | | |
| | | Discounts | |
| | | Sub-total | |
| | | GST | |
| | | TOTAL TO PAY | |

Method of Payment

☐ Invoice Me (purchase order or reference required)

Register by email to steven@golovin.co.nz

Terms and Conditions

1. Registration is by 1st in - 1st paid basis.
2. If you cannot attend a course, a substitute participant is welcome.
3. If you withdraw from a course in writing or email more than 20 working days prior to the course, you will receive a full refund less a \$50 administration fee.
4. If you withdraw with 10 working days' notice, you will receive a 50% refund.
5. After this, if you do not attend the course, there is no refund.
6. If a course is rescheduled or cancelled due to lack of numbers, or any other valid reason, you will be advised 10 working days before the course and your course fee will be refunded in full.
7. Participants are responsible for their own travel/accommodation bookings and no compensation will be made should the course be rescheduled or cancelled.
8. Participants must bring their own laptop. Install HEC-HMS and/or HEC-RAS and test the software prior to attending the course. Download links will be provided to all registrants.
9. To hire a laptop pre-loaded with all required software and tutorials for \$50 per day, please contact steven@golovin.co.nz.

Authorisation Signature

Name _____

Signature _____ Date _____